

# CHEERTAINER: BAG-IN-BOX REINVENTED



# GLOBAL CAPABILITIES

CDF Corporation is an international company that specializes in the manufacture and sale of high quality liners and flexible packaging. Innovation, exploration and partnership have been critical to CDF's success in the world market. We built the business on customer collaboration and a "can do" attitude. We are entrepreneurs at heart. Open to new ideas. Flexible to customer needs. Anticipating, rather than reacting to market trends.



CDF is a global leader with production facilities in the United States, two locations in Europe (Lugano, Switzerland and Varnamo, Sweden) and manufacturing alliances in Asia.

-  *CDF Production Facilities*
-  *CDF Manufacturing Alliances*

## BEST OF BOTH WORLDS

We combine environmental benefits of traditional bag-in-box packaging and many of the performance benefits of a rigid container.



## WHY CHEERTAINER® IS UNIQUE

The Cheertainer is not your typical bag-in-box. It provides customers a package design that outperforms pillow construction in dispense and use. Developed to form the shape of a box, the patented Cheertainer is unique in its design and construction. Manufactured with side gussets that “form-fit” to the container, the Cheertainer allows for a free flowing complete dispense. Its design provides an eco-smart choice, without sacrificing the quality and reliability demanded by our customers.

# The Cheertainer is not your typical bag-in-box



## CHEERTAINER PRODUCT BENEFITS

- Significant cost savings in logistics and storage costs
- Reduces costly price fluctuations by using at least 80% less plastic than rigid containers
- Major reduction in handling costs
- 99.9% dispense of liquid products without surging or glugging
- Fills without air, resulting in no foaming or splashing
- More user friendly – fitment always in dispense position
- Eliminates internal cleaning costs associated with alternative rigid packaging
- 10:1 logistical transportation advantage, reducing fuel consumption and CO<sub>2</sub>/greenhouse gas emissions
- 89% fewer CO<sub>2</sub> emissions during production than competitive rigid packaging
- 50% fewer CO<sub>2</sub> emissions during transport than competitive rigid packaging

## CHEERTAINER VS. PAIL

- Reduces plastic consumption by 92%
- 10:1 space savings over pails, reducing consumption of fuel and emission of greenhouse gases
- Improves palletization efficiency, allowing for more efficient inventory and transportation stacking



## CHEERTAINER VS. SEMI-RIGID PACKAGE

- Manufactured with 50% less plastic
- 3:1 space savings, reducing consumption of fuel and emission of greenhouse gases
- Ships and stores flat, maximizing transportation and warehouse efficiency

## CHEERTAINER VS. PILLOW

- Easier to dispense due to the fitment always being in the proper position
- Reduces flex cracking since the bag fits perfectly in the box, there are no folds or interior movement
- Dispenses 99.9% of most products because product is not trapped in the folds, creases or shoulders of the bag



## CHEERTAINER VS. JERRYCAN

- Reduces plastic consumption by 86%
- 20:1 space savings over jerrycans, reducing consumption of fuel and emission of greenhouse gases
- Improves palletization efficiency, allowing more product per pallet



All liners  
are not  
created equal

## QUALITY

Success in flexible liquid packaging depends ultimately on performance and reliability. CDF1 Smart Seal Technology™ and a series of in-process tests ensure the ultimate reliability of the Cheertainer product.

Proprietary CDF1 Smart Seal Technology optimizes precision and consistency through monitoring the temperature, time and pressure of every seal on every liner. An industry first and a critical aspect of CDF1 Smart Seal Technology is the SCADA software that allows CDF to monitor, measure and store data on every seal of every bag we make. This system allows us to completely verify and validate every bag made at the time of manufacture or anytime later by recalling any of the machine conditions that contributed to the building of the liner.

CDF's in-process tests include a tensile and elongation test, a hydrostatic fitment test, a leak test, dimensional compliance and a 100% visual inspection to verify the performance of the product.





## CERTIFICATIONS

- ISO 9001:2008-registered company
- All liners are made from FDA-approved materials for food contact
- Kosher certified
- Manufacturing facilities comply with Good Manufacturing Practice (GMP) standards

## SIZES:

- Up to 25L

## FILM OPTIONS:

- Standard barrier – laminated polyethylene/nylon
- High barrier – laminated polyethylene/EVOH/nylon
- Metalized – polyethylene/metalized polyester
- Other custom films

# APPLICATIONS & MARKETS



## BEVERAGES

Beverage bases  
Coffee  
Drink mixes  
Iced tea  
Juice  
Juice concentrates  
Lemonade  
Liquor  
Soft drink ingredients  
Tea  
Water  
Wine

### **CUSTOMER BASE:**

Beverage Distributors  
Beverage Processing Plants  
Beverage Producers  
Catering  
Contract Filling & Co-packing  
Operations  
Convenience Stores  
Corrugated Manufacturers  
Restaurants  
Wholesale Stores



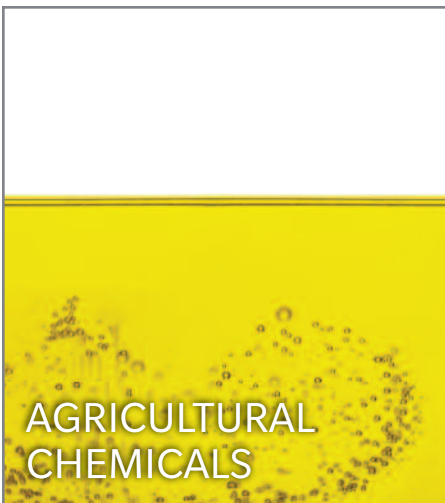
## FOOD

Condiments  
Dairy  
Edible oils  
Flavorings  
Malt  
Marinades  
Post-mix syrups  
Purees  
Rice wine vinegar  
Salsa  
Sauces  
Soft serve ice cream  
Soup  
Soy sauce  
Vinegar

### **CUSTOMER BASE:**

Catering  
Contract Filling &  
Co-packing Operations  
Convenience Stores  
Corrugated Manufacturers  
Food Distributors  
Food Manufacturers  
Food Processing Plants  
Wholesale Stores



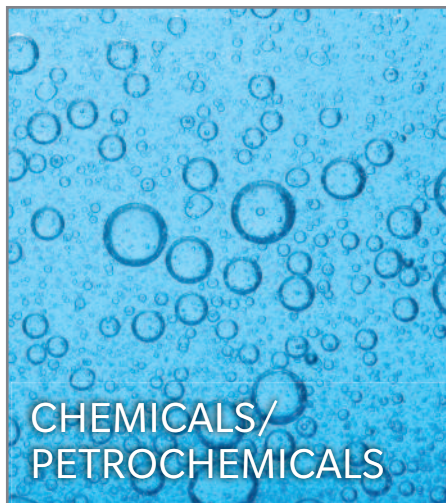


## AGRICULTURAL CHEMICALS

- Bactericides
- Fungicides
- Herbicides
- Insecticides
- Liquid fertilizer
- Pesticides
- Seed treatments

### CUSTOMER BASE:

- Agricultural Chemical Contract Fillers
- Agricultural Chemical Distributors
- Agricultural Chemical Manufacturers
- Agricultural Chemical Processing Plants
- Corrugated Manufacturers
- Home Improvement Stores
- Wholesale Stores

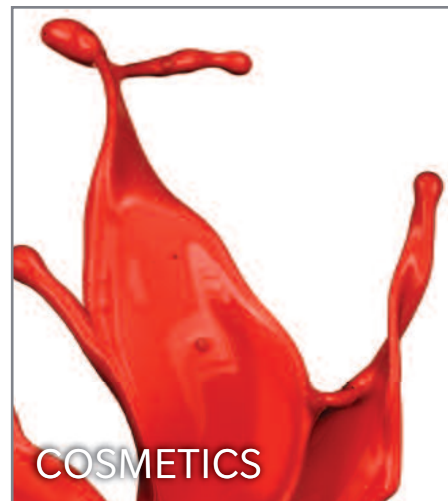


## CHEMICALS/ PETROCHEMICALS

- Adhesives
- Automotive lubricants
- Automotive oils
- Car wash chemicals
- Coatings
- Detergents
- Disinfectants
- Dyes
- Floor wax
- Ink
- Multi-purpose cleaners
- Non-bleach additives
- Paints
- Petroleum
- Sanitizers
- Sealants
- Soaps
- Solvents
- Stains
- Strippers
- Swimming pool chemicals
- Thinners
- Varnishes

### CUSTOMER BASE:

- Chemical Contract Fillers
- Chemical Distributors
- Chemical Manufacturers
- Chemical Processing Plants
- Contractors
- Corrugated Manufacturers
- Home Improvement Stores
- Lubricant Companies
- Lubricant Contract Fillers
- Wholesale Stores



## COSMETICS

- Cleansers
- Conditioner
- Creams
- Liquid makeup
- Lotions
- Shampoo
- Tanning lotion

### CUSTOMER BASE:

- Contract Filling & Co-packing Operations
- Corrugated Manufacturers
- Cosmetic Distributors
- Cosmetic Manufacturers
- Cosmetic Processing Plants
- Tanning Salons
- Wholesale Stores

# FITMENT CONSIDERATIONS

- Do you need a tamper evident fitment?
- Are you using an aseptic filler?
- What is your product's viscosity?
- How will your product be dispensed?
- What is your current dispensing equipment?



IC-7002



IC-7004



IC-7005



IC-7010



IC-7011



IC-7013



IC-7014



IC-7015



IC-7016



IC-7022



IC-7026



IC-7029



IC-7030

# FILLING EQUIPMENT

CDF assists customers in procuring the proper filling equipment; some of the options are listed on these pages.

## SEMI-AUTOMATIC

The semi-automatic filler is a bag-in-box filler capable of filling a wide range of shelf stable or extended life products up to 25L. The filler has full CIP (clean in place) and SIP (sterilize in place) modes and can be steam sterilized.



## FULLY-AUTOMATIC

The fully-automatic filler is a compact web-fed fully auto filling machine capable of filling a wide range of shelf stable or extended life products up to 25L. The filling head has been designed to give optimum fill quality without any spillage. The filling machine has full CIP (clean in place) and SIP (sterilize in place) modes and can be steam sterilized.



CDF Corporation / 77 Industrial Park Road / Plymouth, MA 02360  
800.443.1920 / [cheertainer@cdf1.com](mailto:cheertainer@cdf1.com) / [www.cdf1.com](http://www.cdf1.com)